

**POWER OF AR AND VR**

# **PREPARING THE COMPUTER LAB**



**Co-funded by  
the European Union**



2024-1-PL01-KA220-VET-000243150

**JACEK KAWAŁEK**



# POWER OF AR AND VR



**THIS TRAINING COVERS THE BASICS INTENDED TO ACQUIRE KNOWLEDGE AND SKILLS IN CREATING 3D MODELS FOR VR AND AR.**

**ON ITS BASIS YOU CAN ALSO CREATE ANIMATIONS AND 3D PRINTS.**

**IT IS BASED ON THE EXPERIENCE WE HAVE GAINED WHILE IMPLEMENTING THE PROJECT**

ZESPÓŁ SZKÓŁ NR 1  
IM. HENRYKA SIENKIEWICZA  
W KOŁOBRZEGU



**KOŁOBRZEG 3D**



**[HTTPS://KOŁOBRZEG3D.2LO.PL](https://kołobrzeg3d.2lo.pl)**

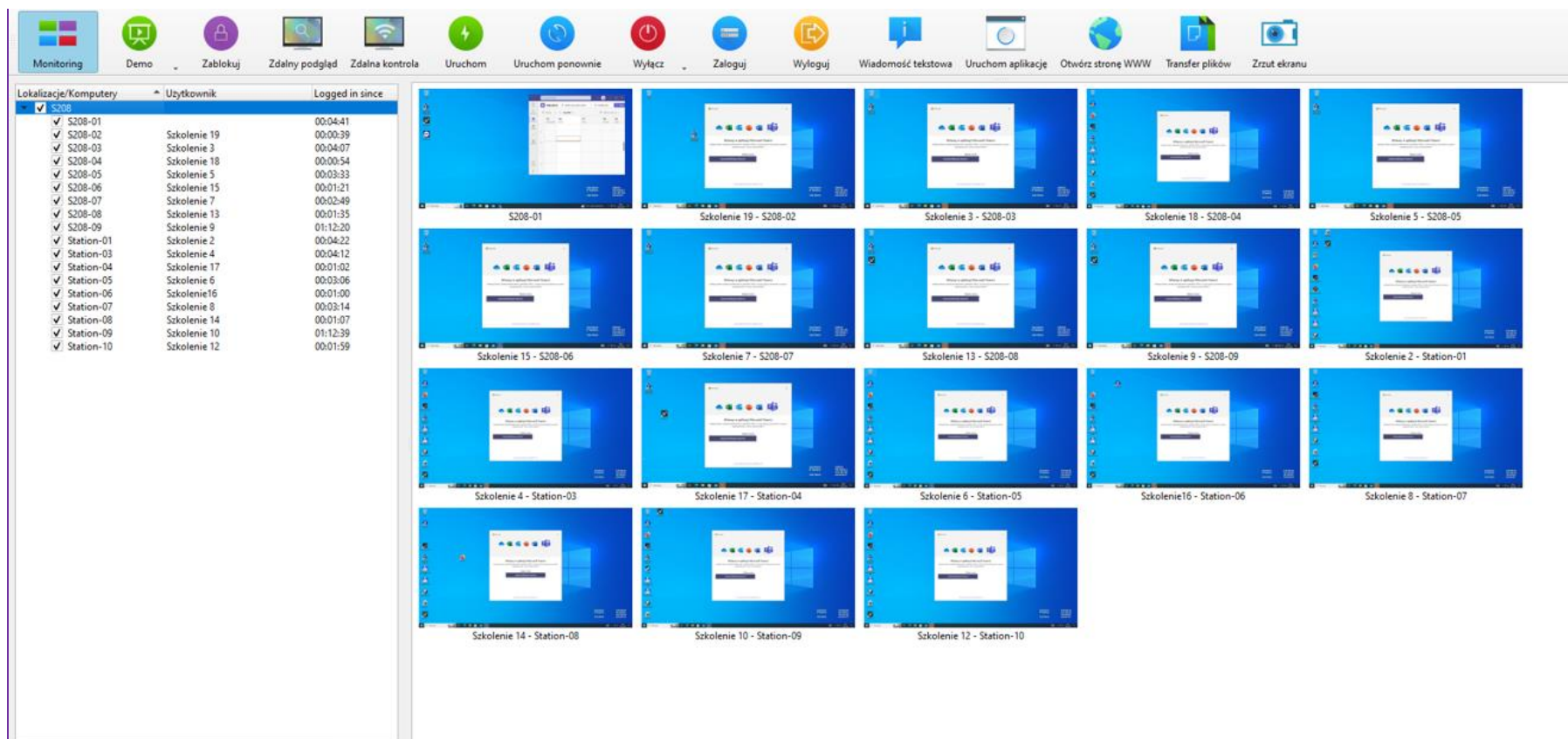
**PREPARING THE COMPUTER ROOM**

# POWER OF AR AND VR



**TO HAVE CONTROL OVER CORRECT PERFORMANCE OF TASKS,  
INSTALL THE FREE VEYON SOFTWARE**

<https://veyon.io/en/download/>



The screenshot displays the Veyon software interface. At the top, there is a taskbar with various system icons and application shortcuts. Below the taskbar, a sidebar on the left lists the localizations/computers and the user logged in since. The main area shows a grid of 20 remote desktop sessions, each displaying a Windows desktop with a blue background and a white window. The sessions are labeled with names like 'S208-01', 'Skolenie 19 - S208-02', etc.

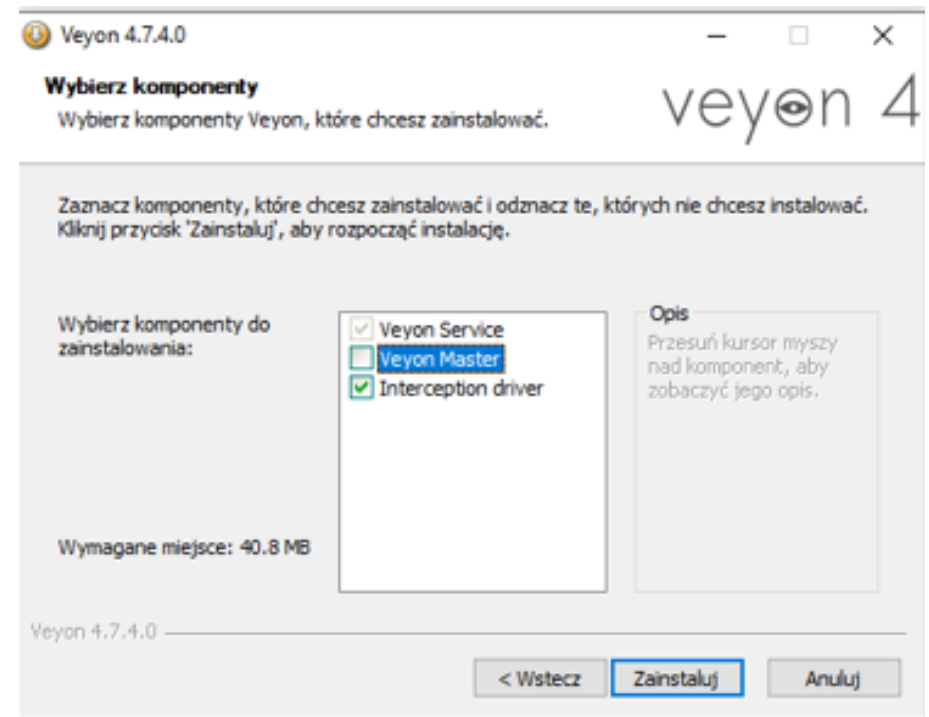
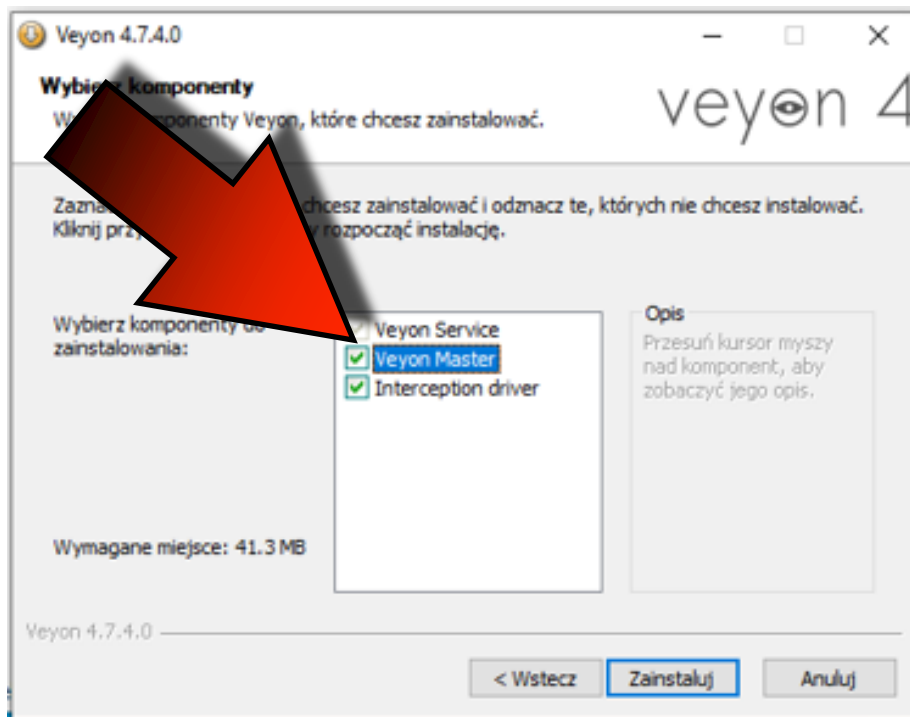
Localizacje/Komputery	Uzytkownik	Logged in since
✓ S208		
✓ S208-01		00:04:41
✓ S208-02	Skolenie 19	00:00:39
✓ S208-03	Skolenie 3	00:04:07
✓ S208-04	Skolenie 18	00:00:54
✓ S208-05	Skolenie 5	00:03:33
✓ S208-06	Skolenie 15	00:01:21
✓ S208-07	Skolenie 7	00:02:49
✓ S208-08	Skolenie 13	00:01:35
✓ S208-09	Skolenie 9	01:12:20
✓ Station-01	Skolenie 2	00:04:22
✓ Station-03	Skolenie 4	00:04:12
✓ Station-04	Skolenie 17	00:01:02
✓ Station-05	Skolenie 6	00:03:06
✓ Station-06	Skolenie 16	00:01:00
✓ Station-07	Skolenie 8	00:03:14
✓ Station-08	Skolenie 14	00:01:07
✓ Station-09	Skolenie 10	01:12:39
✓ Station-10	Skolenie 12	00:01:59

**PREPARING THE COMPUTER ROOM**

# ON THE TEACHER'S COMPUTER WE MARK **VEYON MASTER**

**TEACHER'S  
COMPUTER**

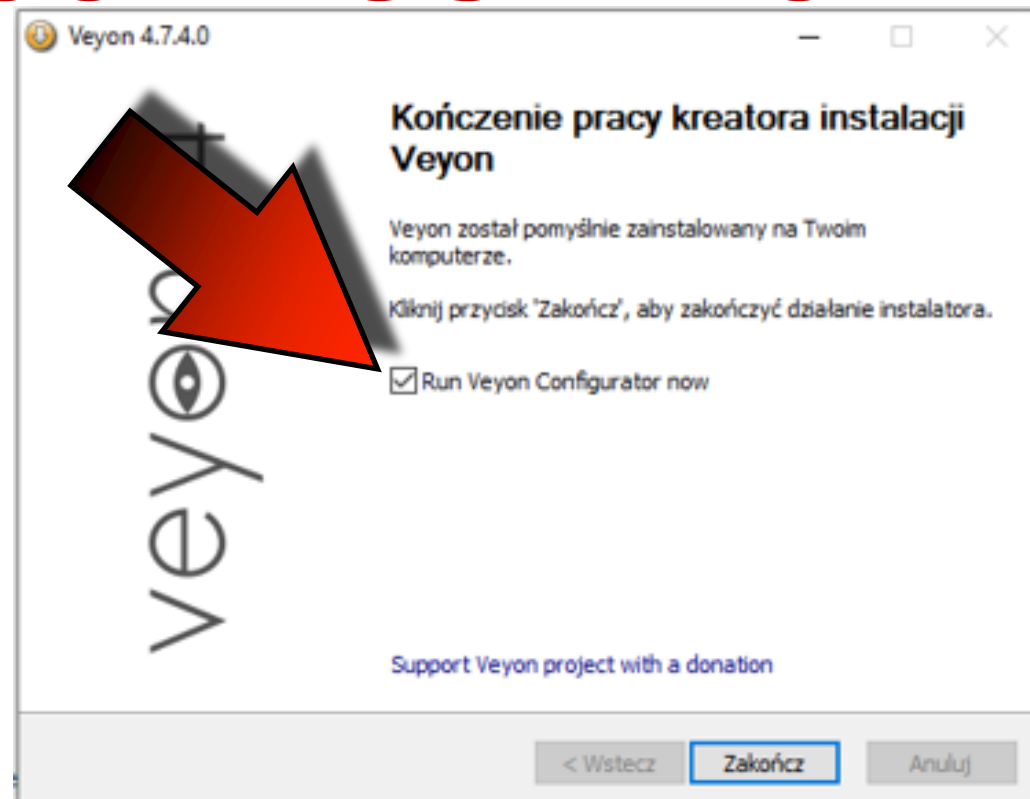
**STUDENT'S  
COMPUTER**



# PREPARING THE COMPUTER ROOM

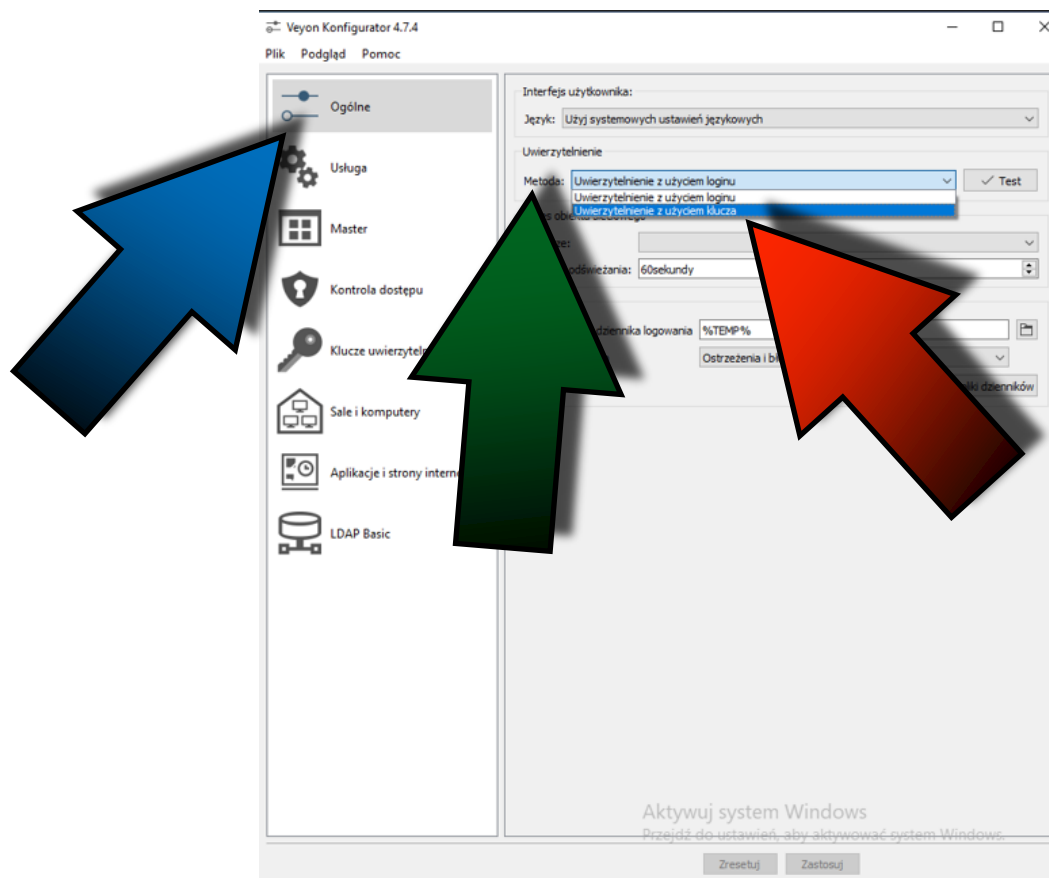
## POWER OF AR AND VR

**ONCE THE INSTALLATION  
IS COMPLETE, WE WILL RUN  
CONFIGURATOR**



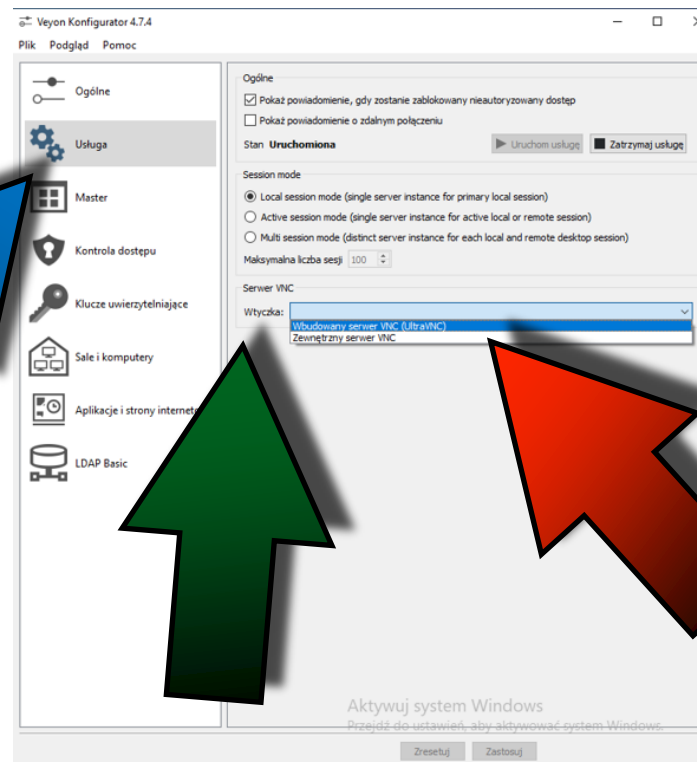
**PREPARING THE COMPUTER ROOM**

## IN THE GENERAL TAB WE SELECT THE METHOD KEY-BASED AUTHENTICATION

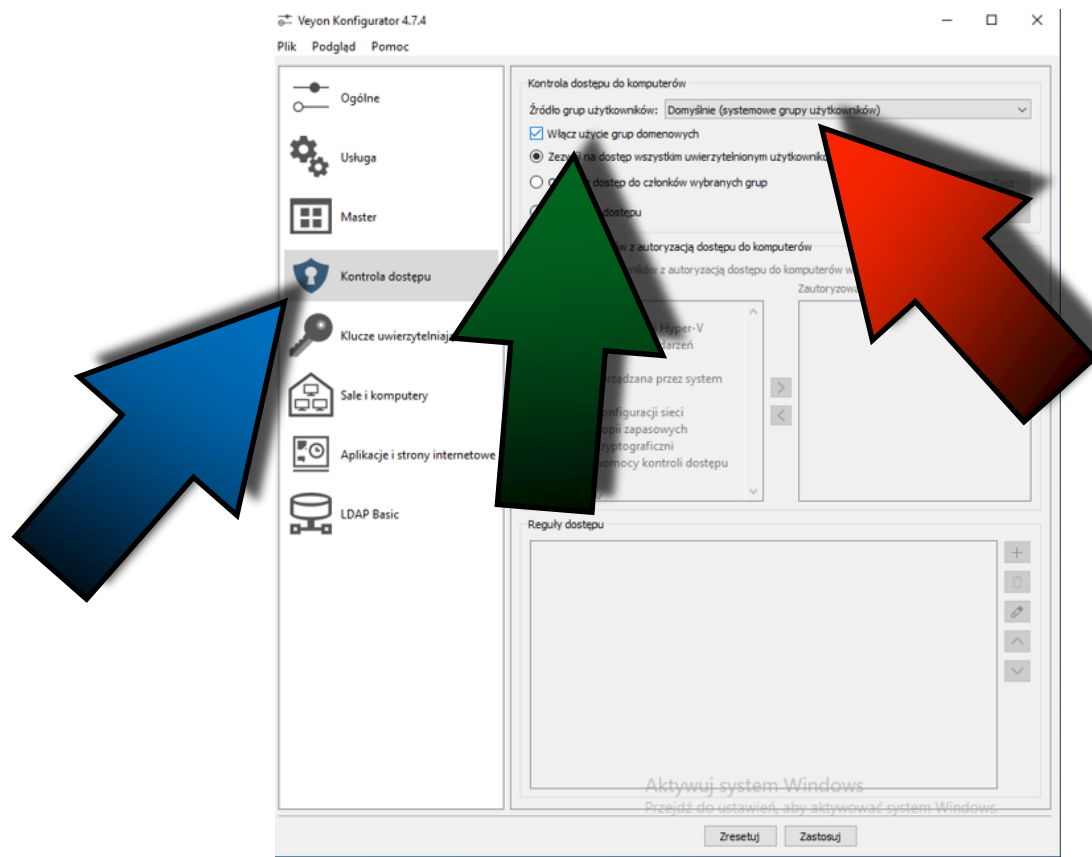


## PREPARING THE COMPUTER ROOM

## IN THE SERVICES TAB WE SELECT AS **PLUGIN** **BUILT-IN VNC SERVER**

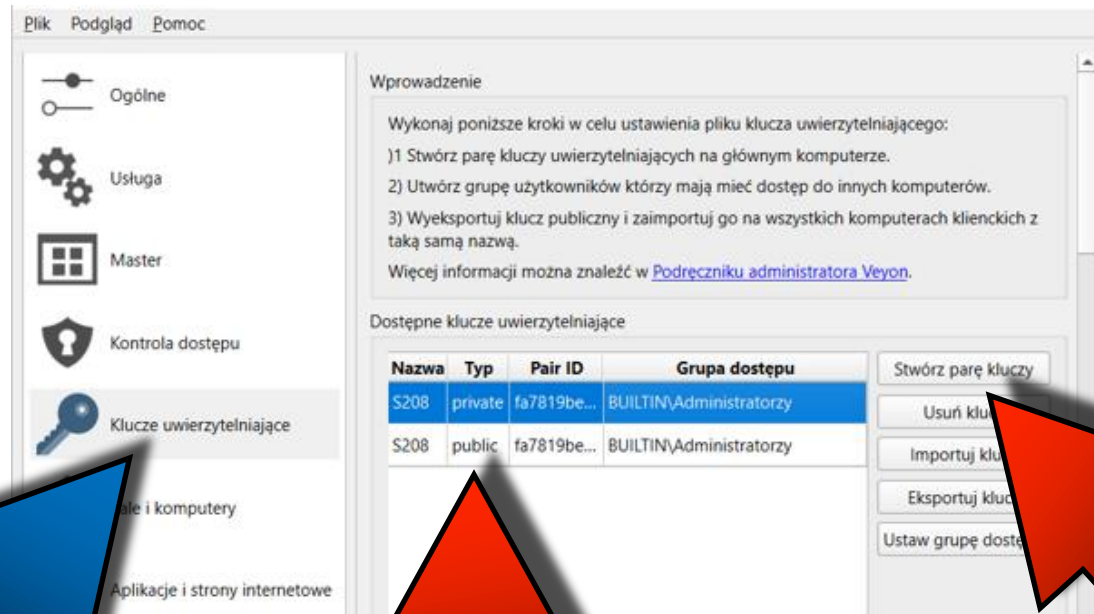


## IN THE ACCESS CONTROL TAB AS THE SOURCE OF USER GROUPS WE CHOOSE **DEFAULT**





## ON TEACHER'S COMPUTER WE CREATE A **PAIR OF KEYS**



Plik Podgląd Pomoc

Ogólne  
Usługa  
Master  
Kontrola dostępu  
Klucze uwierzytelniające

Wprowadzenie

Wykonaj poniższe kroki w celu ustawienia pliku klucza uwierzytelniającego:

- 1) Stwórz parę kluczy uwierzytelniających na głównym komputerze.
- 2) Utwórz grupę użytkowników którzy mają mieć dostęp do innych komputerów.
- 3) Wyeksportuj klucz publiczny i zaimportuj go na wszystkich komputerach klienckich z taką samą nazwą.



Więcej informacji można znaleźć w [Podręczniku administratora Veyon](#).

Dostępne klucze uwierzytelniające

Nazwa	Typ	Pair ID	Grupa dostępu
S208	private	fa7819be...	BUILTIN\Administratorzy
S208	public	fa7819be...	BUILTIN\Administratorzy

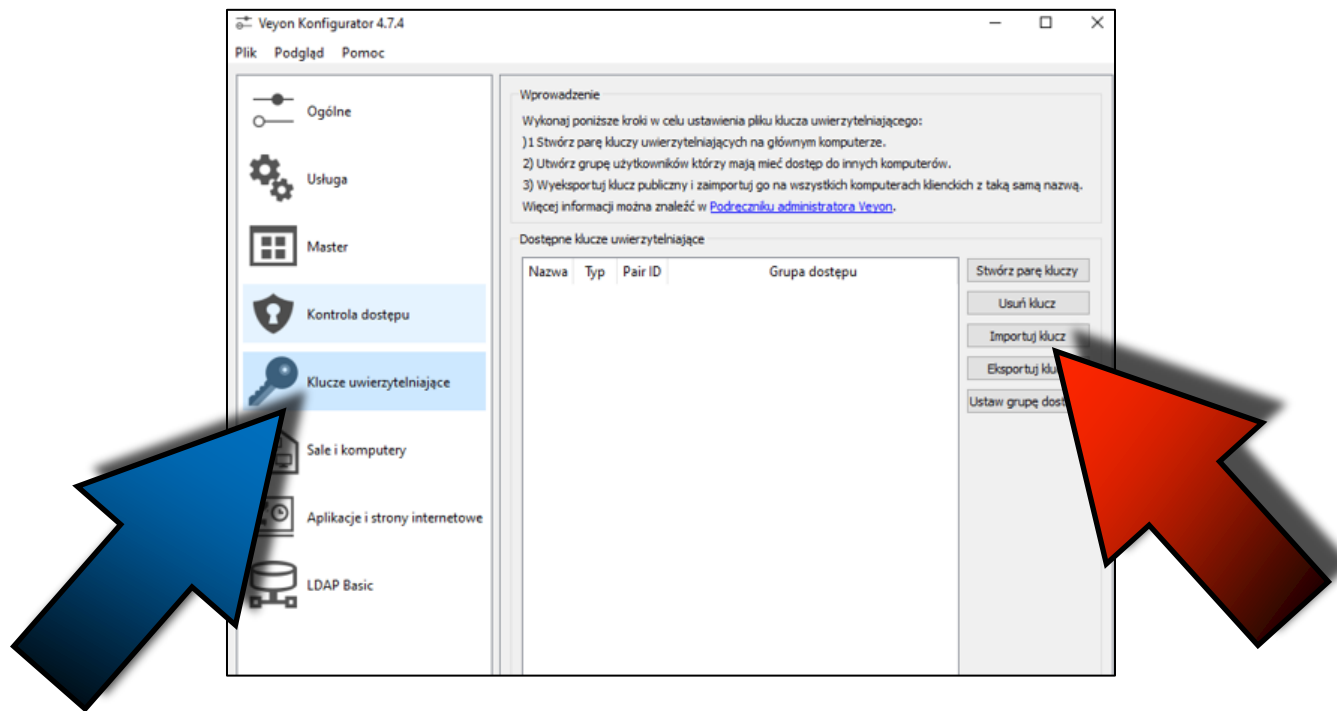
Stwórz parę kluczy  
Usuń klucz  
Importuj klucz  
Eksportuj klucz  
Ustaw grupę dostępu

# WE WRITE DOWN BOTH KEYS

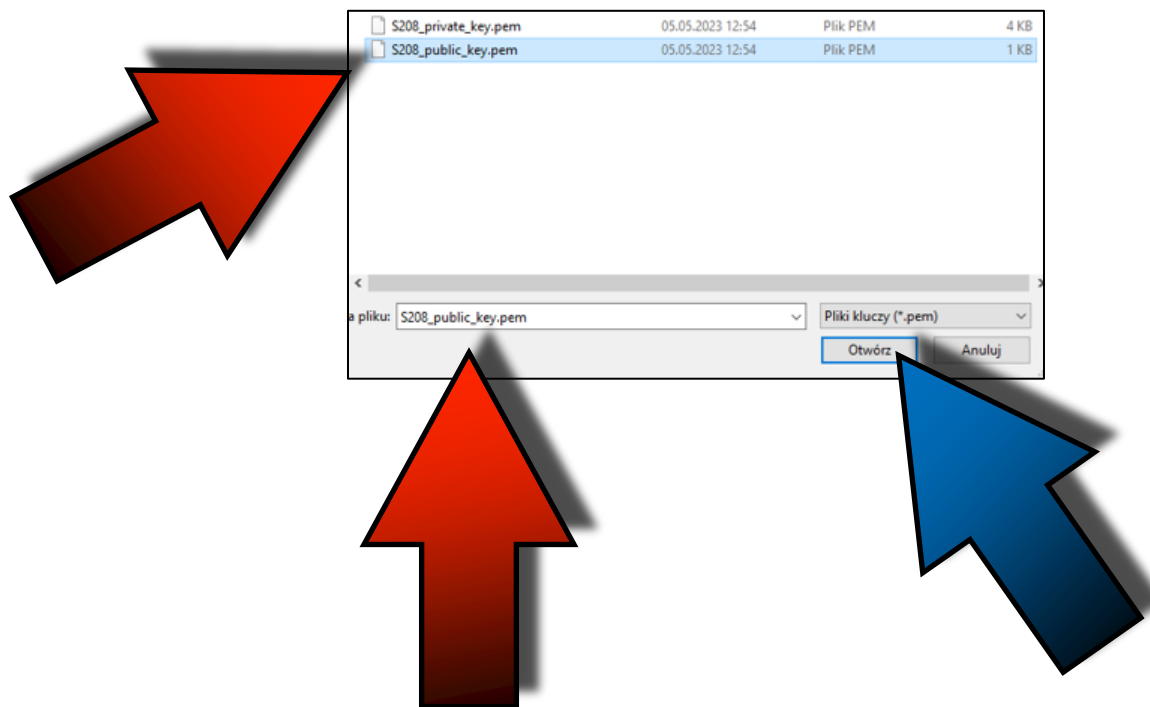
 S208_private_key.pem	05.05.2023 12:54	Plik PEM	4 KB
 S208_public_key.pem	05.05.2023 12:54	Plik PEM	1 KB



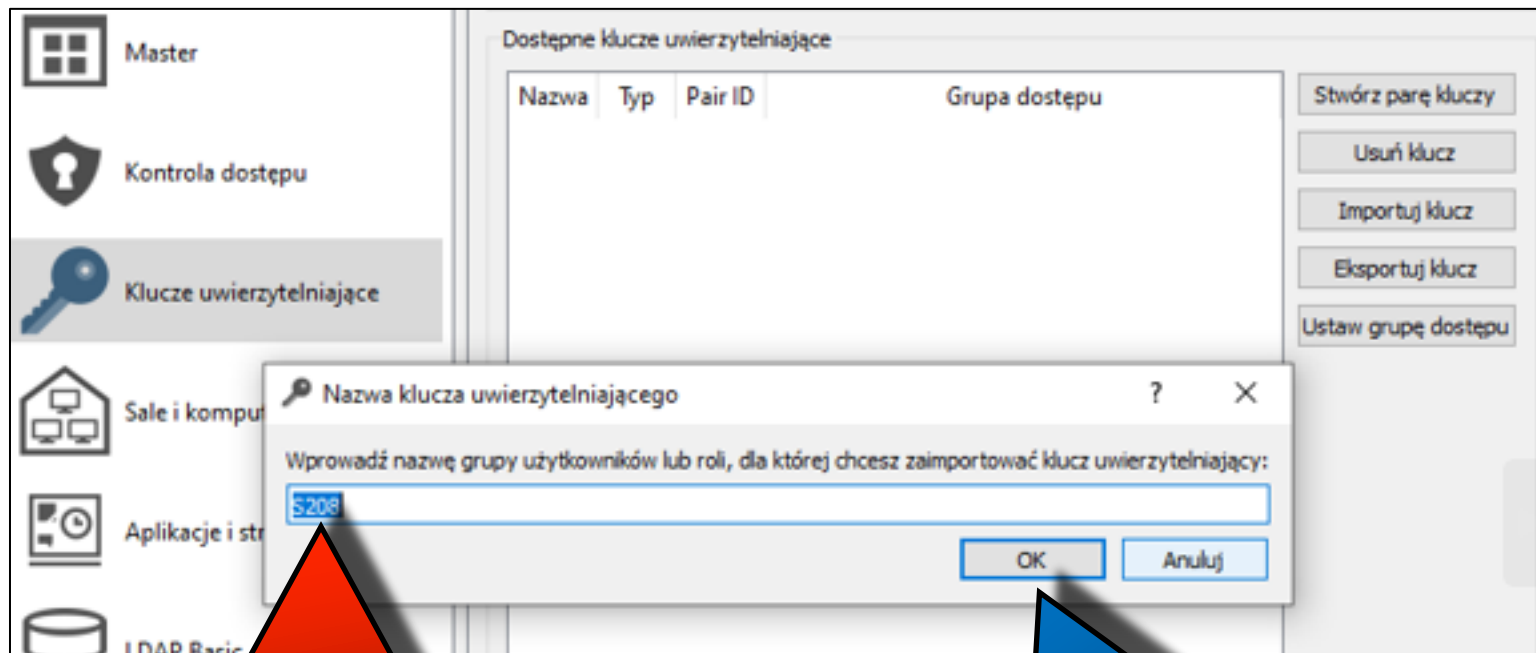
## ON THE STUDENT'S COMPUTER CLICK ON **IMPORT KEY**



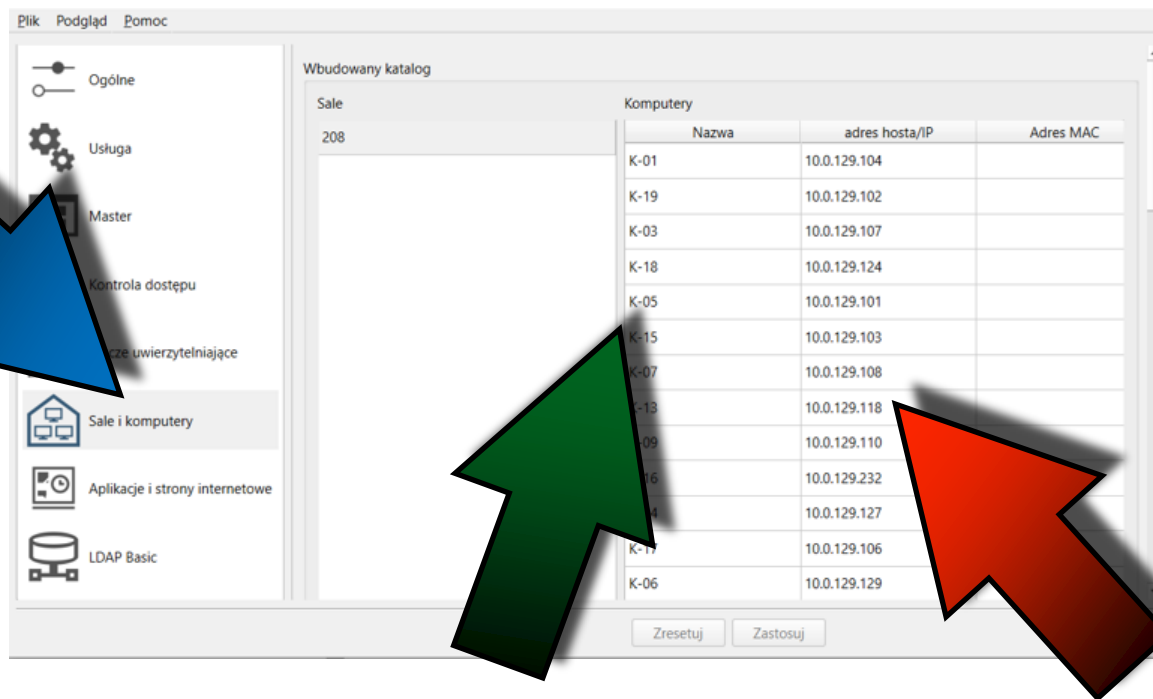
## ONLY **THE PUBLIC KEY** IS IMPORTED TO THE **STUDENT'S COMPUTER**



**WE ACCEPT THE NAME**  
**IN OUR CASE IT IS S208**



## ON THE TEACHER'S COMPUTER IN THE CLASSES AND COMPUTERS TAB WE ADD **THE IP ADDRESSES** OF **STUDENTS' COMPUTERS**



Plik Podgląd Pomoc

Ogólne

Usluga

Master

Kontrola dostępu

Szyfrowanie i certyfikaty

Sale i komputery

Aplikacje i strony internetowe

LDAP Basic

Wbudowany katalog

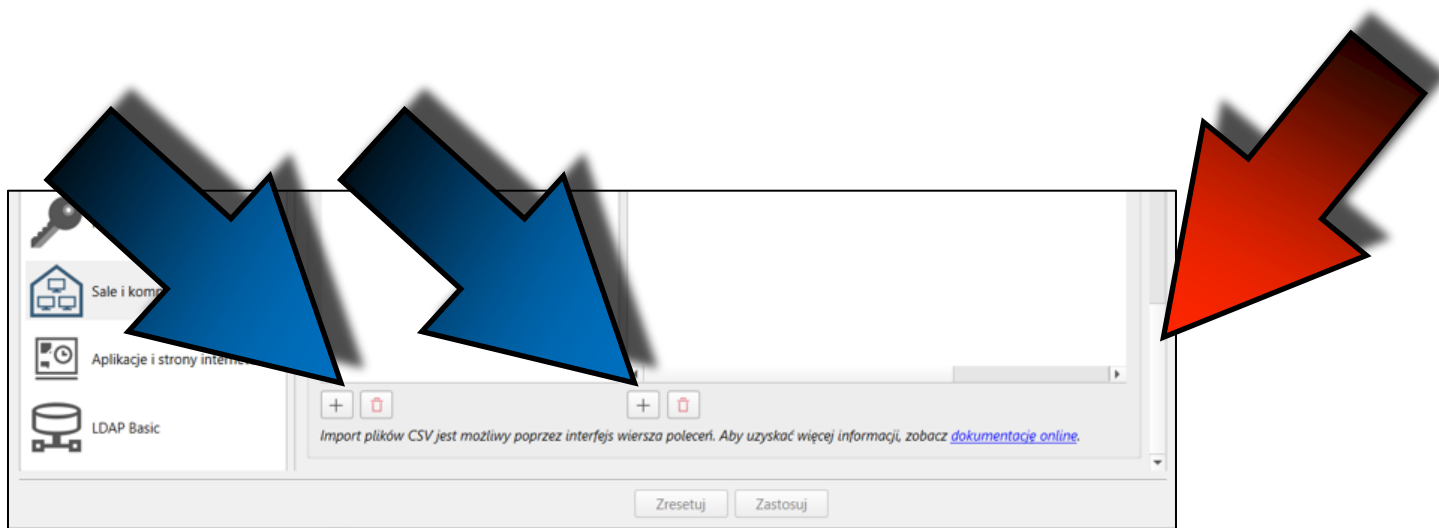
Salon

208

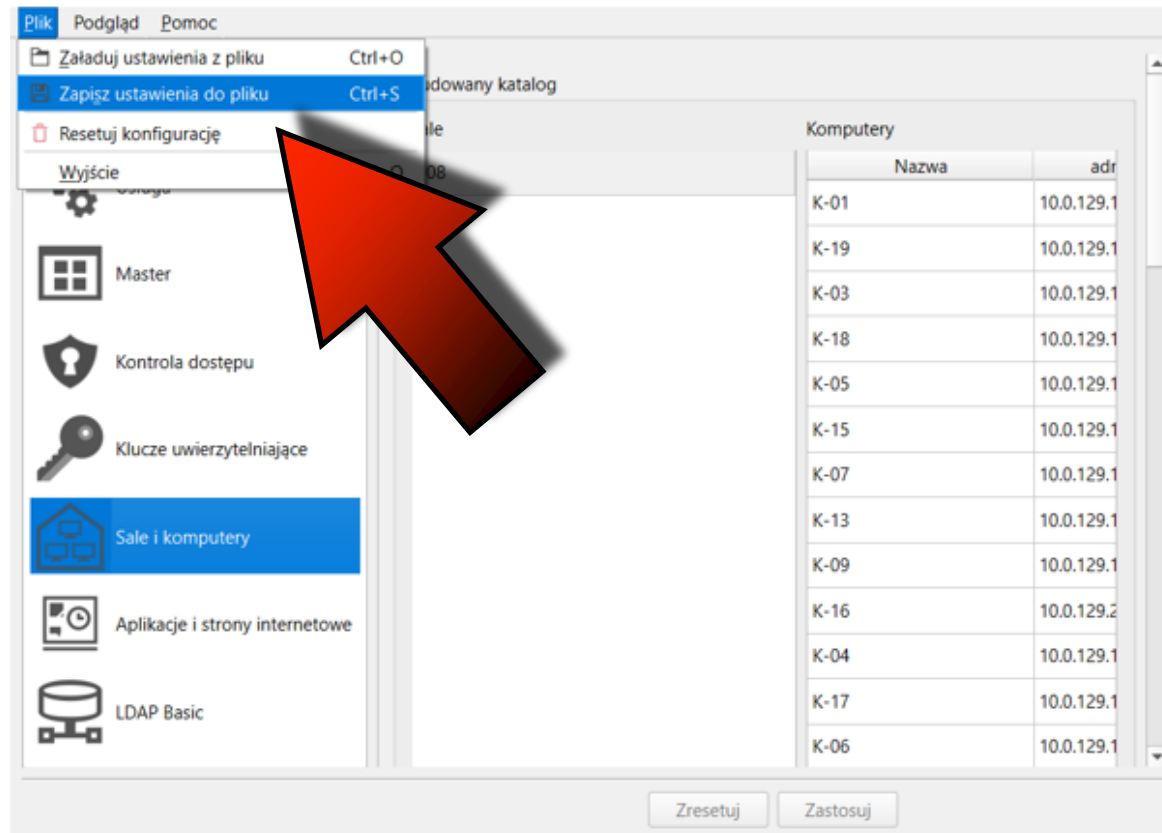
Nazwa	adres hosta/IP	Adres MAC
K-01	10.0.129.104	
K-19	10.0.129.102	
K-03	10.0.129.107	
K-18	10.0.129.124	
K-05	10.0.129.101	
K-15	10.0.129.103	
K-07	10.0.129.108	
K-13	10.0.129.118	
K-09	10.0.129.110	
K-16	10.0.129.232	
K-14	10.0.129.127	
K-11	10.0.129.106	
K-06	10.0.129.129	

Zresetuj Zastosuj

**IF THERE ARE MORE COMPUTERS,  
YOU NEED **TO MOVE THE BAR**  
TO SEE THE BUTTONS  
FOR ADDING AND REMOVING  
COMPUTERS**



IT IS WORTH **SAVED THE CONFIGURATION**  
SO YOU CAN QUICKLY RESTORE IT

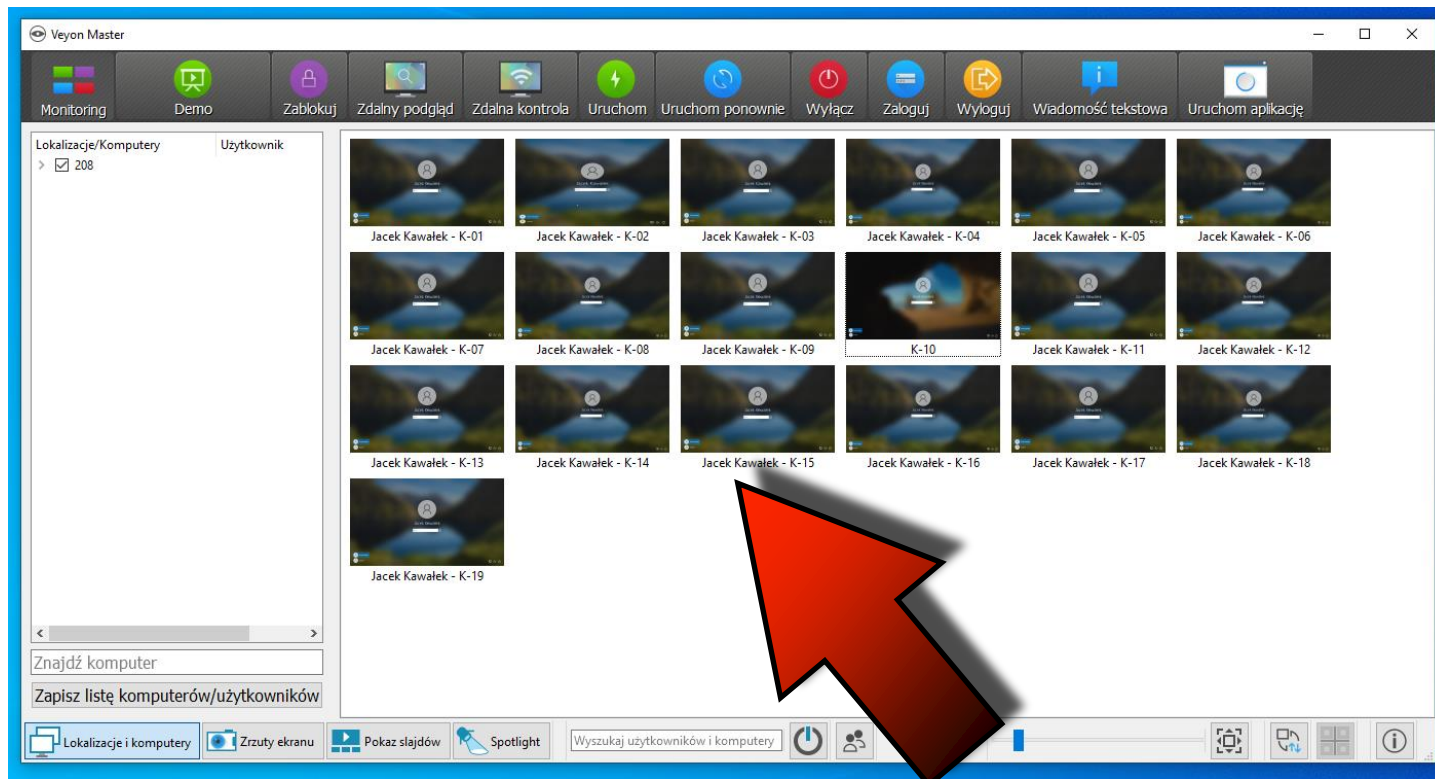


PREPARING THE COMPUTER ROOM



# POWER OF AR AND VR

**IF COMPUTERS  
ARE CONNECTED TO A DOMAIN,  
WE CAN SEE WHO IS LOGGED IN**



**PREPARING THE COMPUTER ROOM**

**ADDITIONALLY,  
WE WILL NEED  
A RASTER GRAPHICS  
PROGRAM  
FOR EXAMPLE**



**OR**



**POWER OF AR AND VR**

**THANK YOU  
FOR YOUR ATTENTION**



**Co-funded by  
the European Union**



**JACEK KAWAŁEK**